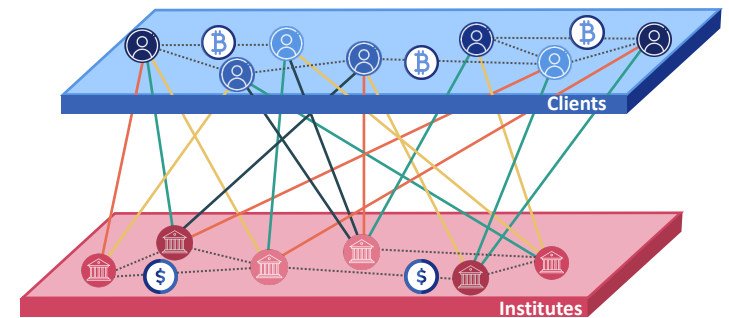
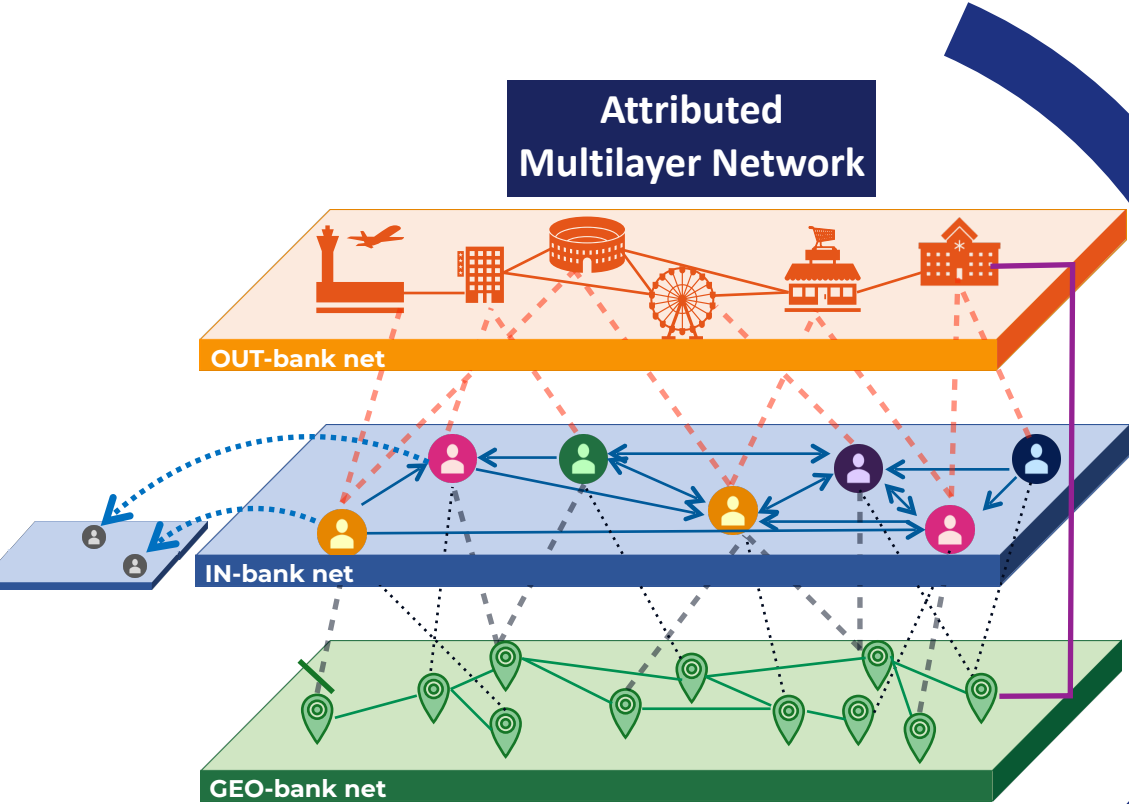


Economic networks

ATTRIBUTED MULTILAYER TEMPORAL NETWORKS

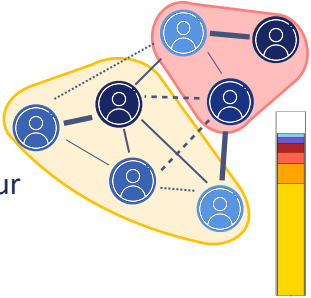


Banks



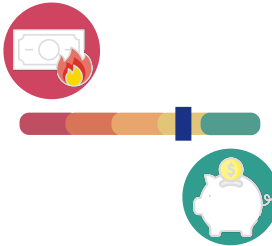
Client segmentation

- Purchase profile
- Behavioural clustering
- City spending behaviour



Behavioral analysis

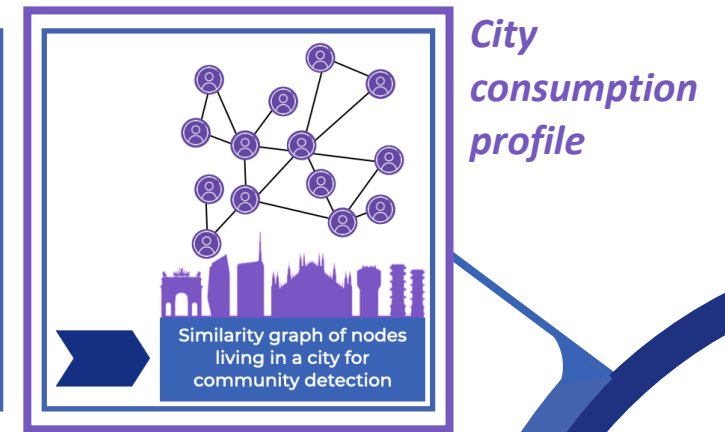
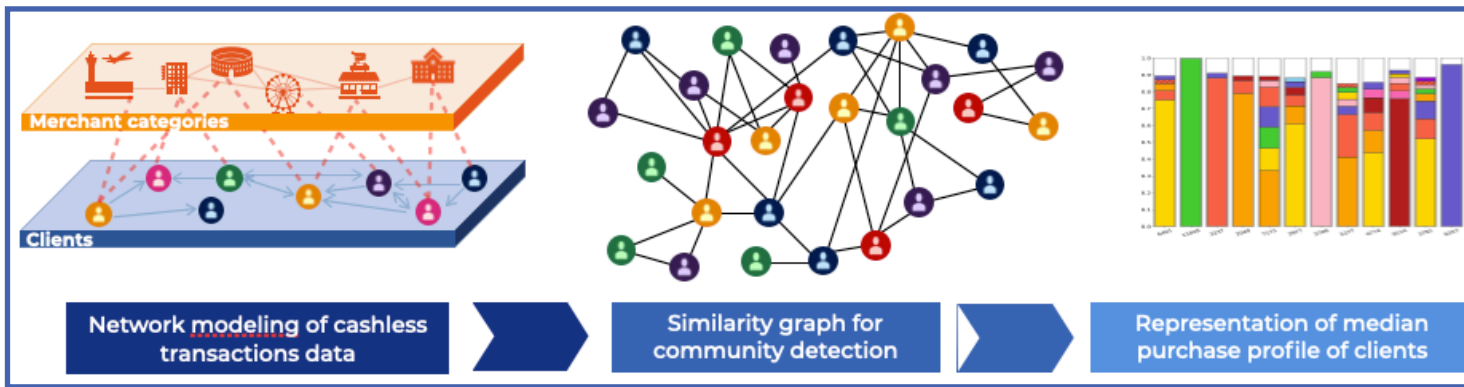
- Risk propensity
- Client classification



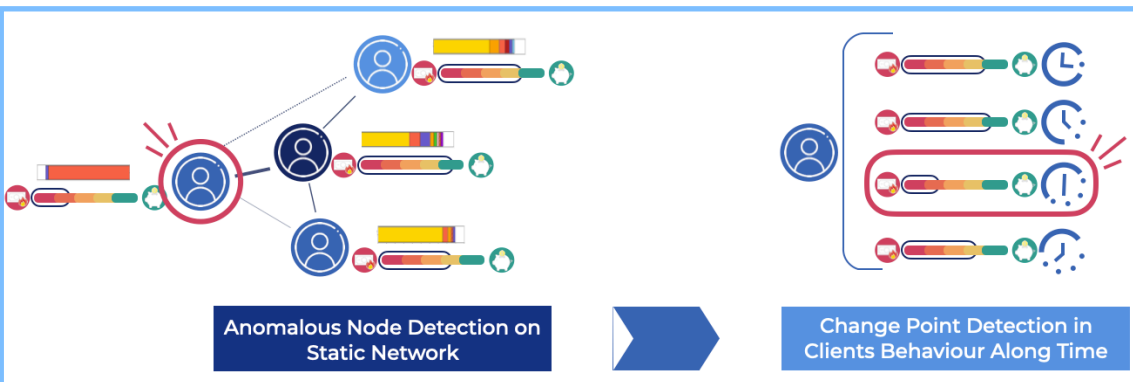
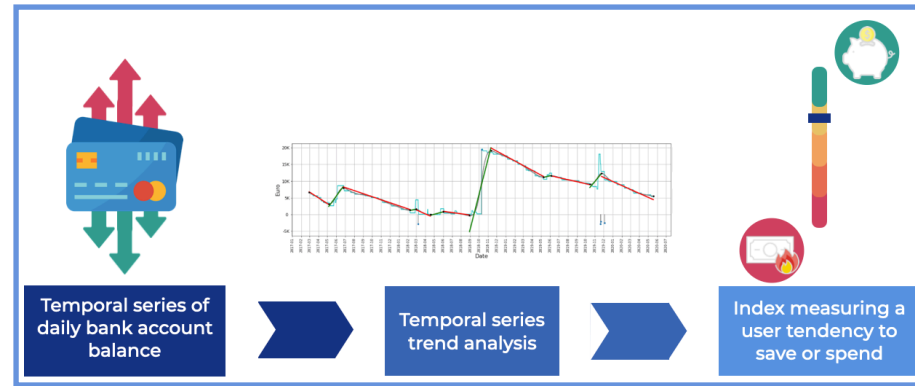
Client classification

- Behavioral risk classes
- Change point



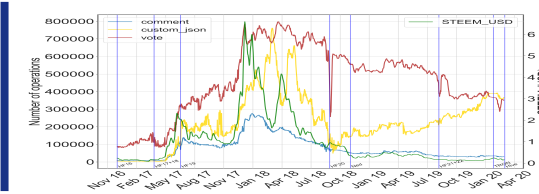


Banks

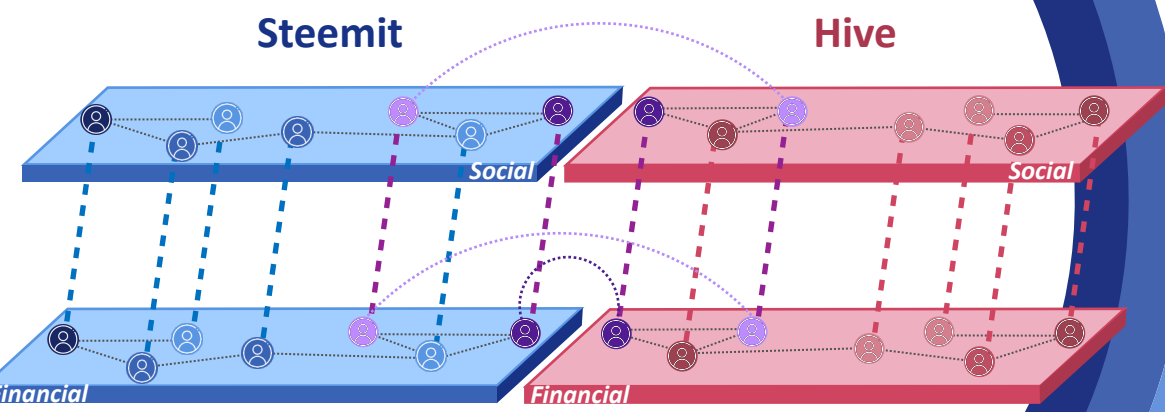


Web 3

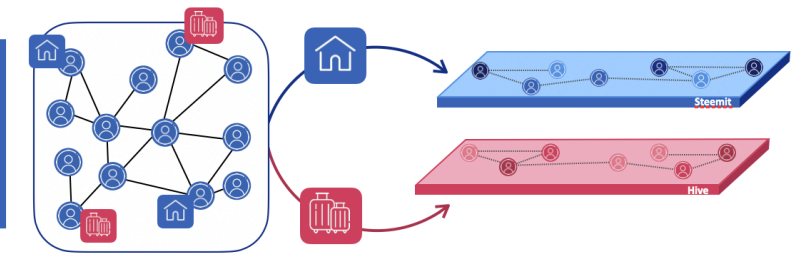
Layer co-evolution



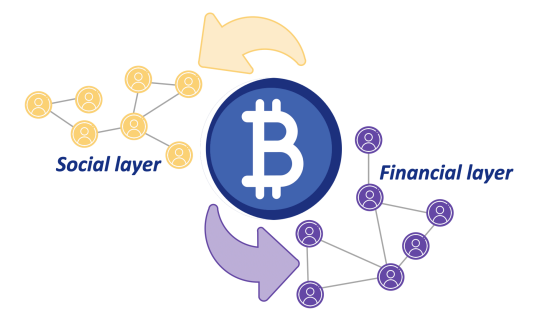
Attributed
Multilayer Network



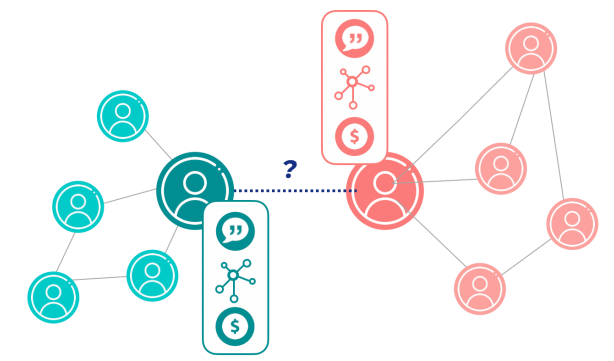
Node role discovery



Interplay between
currency and social/
transaction network



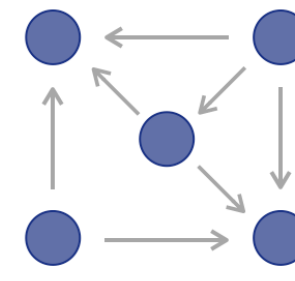
Contextual
transaction and
link prediction



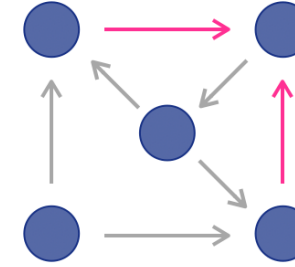
Transaction Analysis



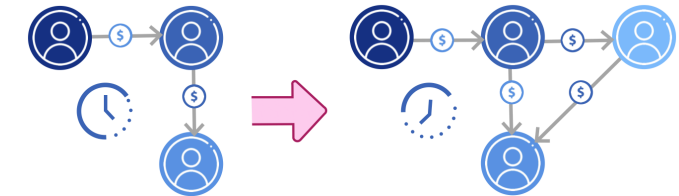
Transaction-based Node classification



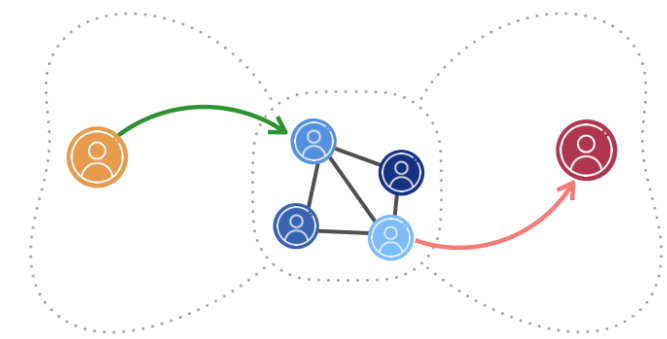
Anomaly detection on temporal motifs



Transaction evolution rules

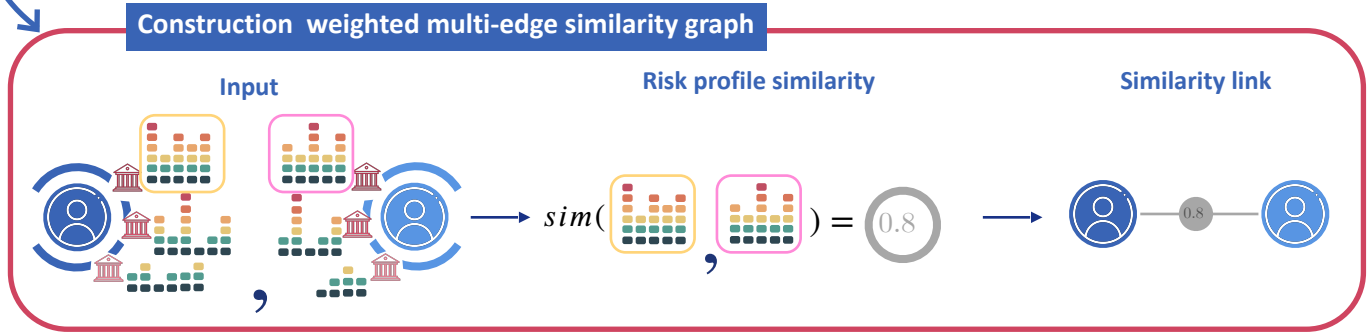
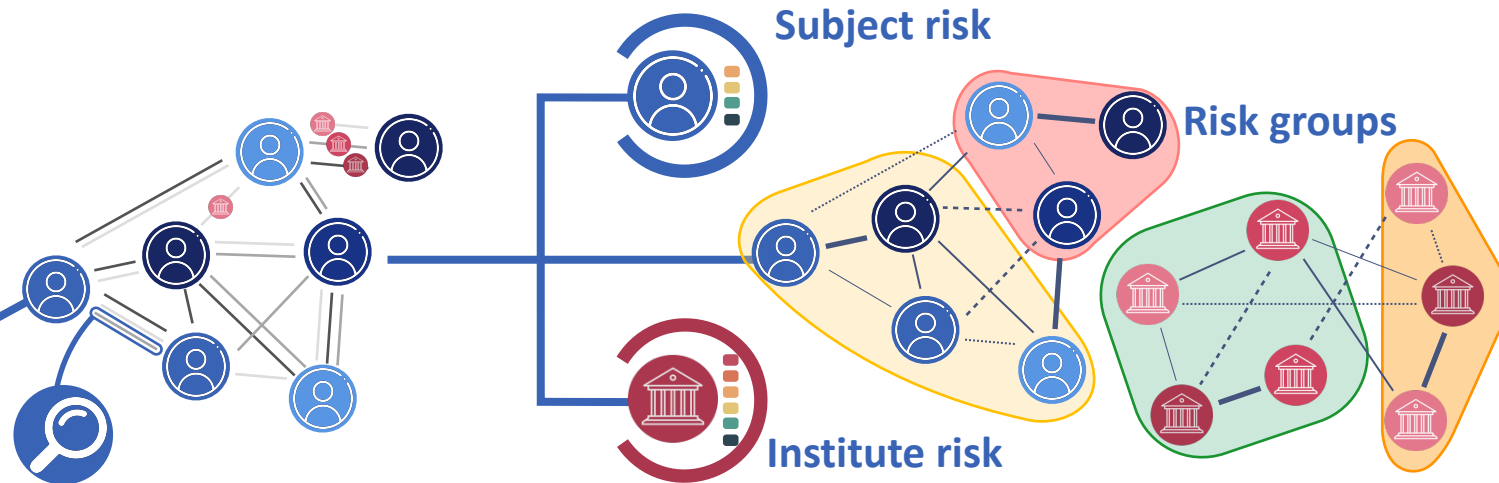
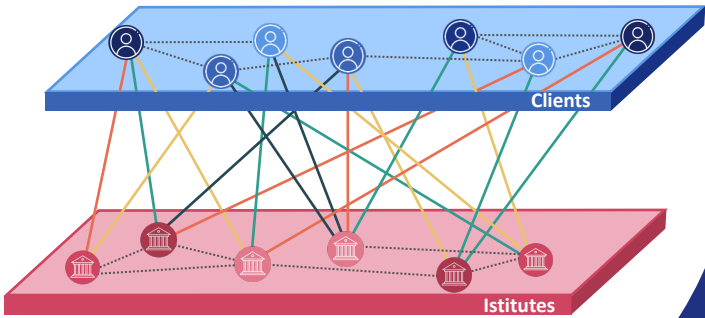


Spread characterisation

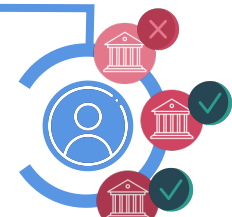
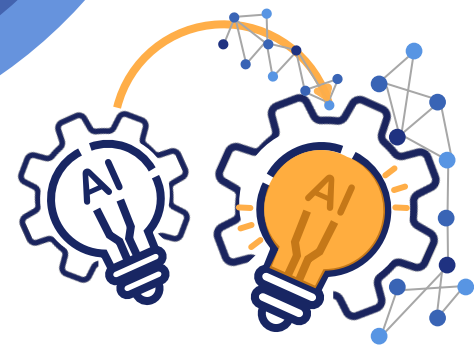


BankIT Milano Hub

Attributed Multilayer Network

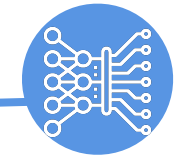


Using Network Science to enhance Artificial Intelligence



Anomaly detection

- Client anomaly
- Institute anomaly



**Graph neural networks/
network embedding**

- Subject Risk prediction
- Institute Risk prediction
- Change point detection
- Indexes co-evolution